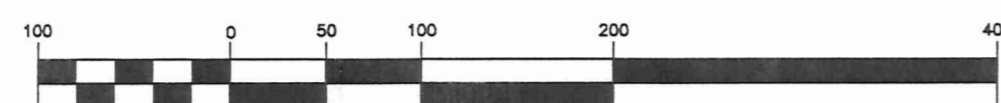




Bearings as used herein are based on an assumed meridian and are to denote angular relationships only.

Situated in the Township of Auburn, County of Geauga, State of Ohio and known as being in Section 4, Tract 2 of Township 6, Range VIII of the Connecticut Western Reserve.

GRAPHIC SCALE



( IN FEET )  
1 inch = 100 ft.

Note:  
All 5/8" Rebar Set are 30" Long  
Capped Foresight Engineering.

This Plat was prepared without the benefit of an abstract of Title and is subject to any state of facts revealed by an examination of the same.

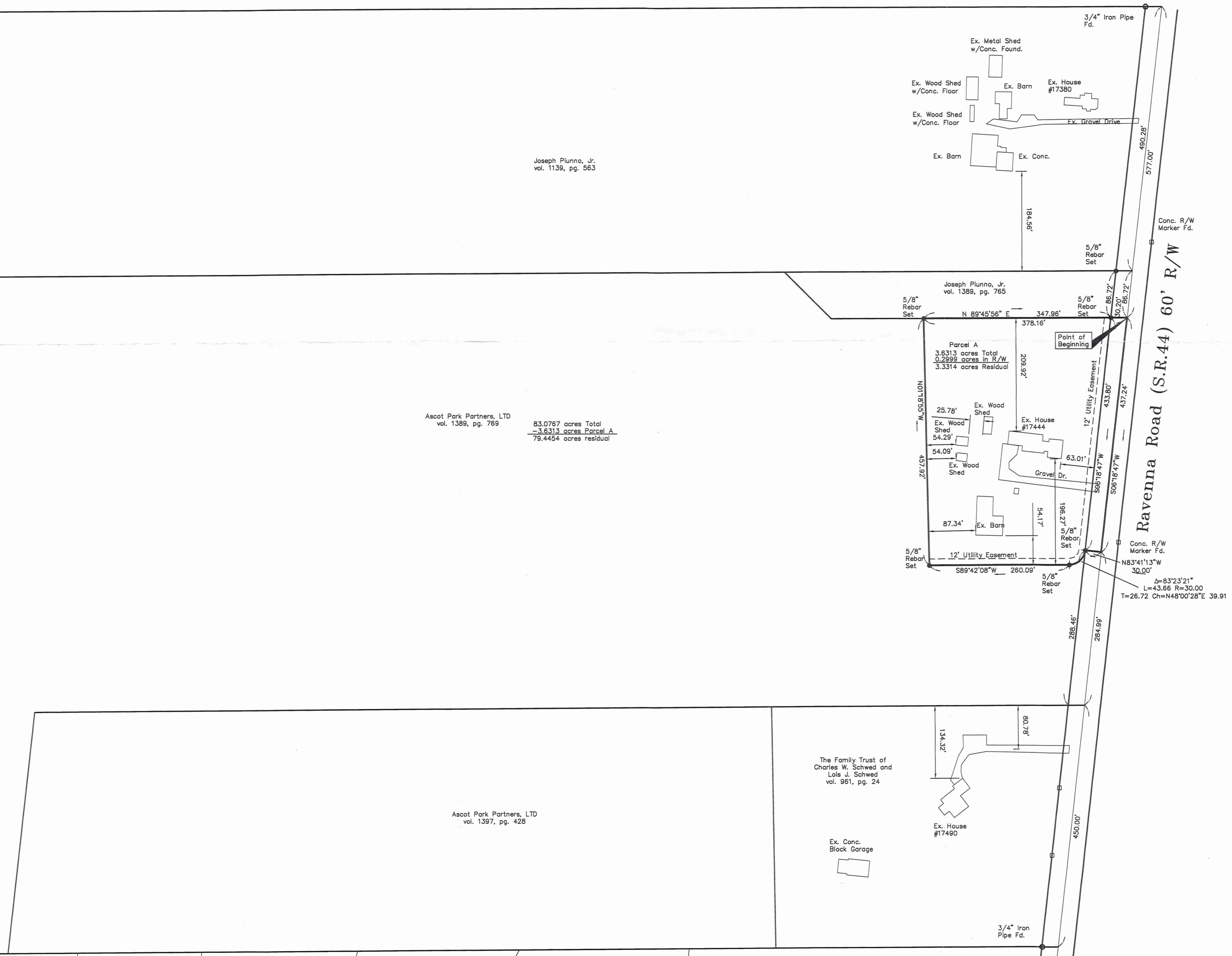
I hereby certify this Plat represents a Survey which meets the minimum standards for a Boundary Survey in the State of Ohio as specified in the Administrative Code Chapter 4733-37 Surveyed in June, 2001 by Foresight Engineering Group, Inc. Under the supervision of Steven N. Roessner, P.S. #7070

*Steven N. Roessner* 9/10/01  
Steven N. Roessner, P.S. #7070  
Foresight Engineering Group, Inc.



SURVEY PLAT & LEGAL DESCRIPTION  
APPROVED PER R.C. 315.251

COB 9/10/01  
OFFICE OF THE ENGINEER  
GEAUGA COUNTY ENGINEER



Joseph Plunno, Jr.  
vol. 1139, pg. 563

Ascot Park Partners, LTD  
vol. 1389, pg. 769

83.0767 acres Total  
- 3.6313 acres Parcel A  
79.4454 acres residual

Ascot Park Partners, LTD  
vol. 1387, pg. 428

The Family Trust of  
Charles W. Schwed and  
Lois J. Schwed  
vol. 961, pg. 24

SCALE : Horz. 1" = 100'	Vert. None
FILE NAME:	I:\Lux10101\ParcelA
DATE :	Sept. 10, 2001

REVISIONS:

Ascot Park Partners, LTD  
Lot Split  
Auburn Twp. - Geauga County - Ohio  
Plat of Survey

SHEET NO.  
1 / 1

**Foresight Engineering Group**  
Engineers & Surveyors  
440 286-1010  
440 286-1034 fax  
Chardon, Ohio 44024

